



LIFT

With our connected and intelligent lift solutions, you enter the third dimension of smart cities.



4G LiftGate 3000
Code 8D5893

4G Gateway for Lift

- **IoT Gateway 4G/LTE special for lift**
- **4G/3G/2G mobile connection**
- **4G VoLTE Ready**
- **2 FXS Voice ports for remote alarm and intercom**
- **1 10/100 LAN port**
- **Integrated Dual-Band Wi-Fi module**
- **BLE 5.0 interface**
- **Radio 868MHz interface for sensors**
- **Dual SIM**
- **Integrated backup battery**
- **1 RS485 or RS232 serial port**
- **1 digital input**
- **1 relay output**
- **SMS remote management**
- **MQTT support**
- **Custom applications supported**

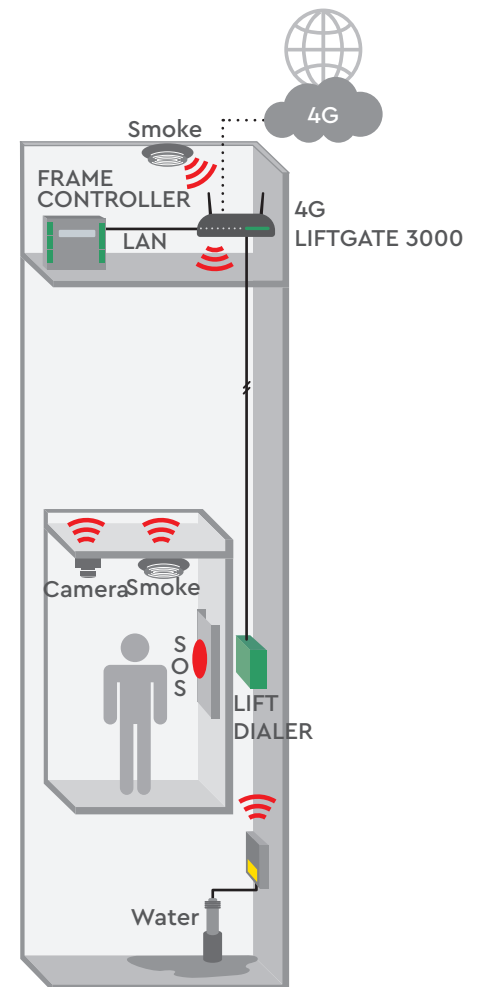
4G LIFTGATE 3000 has been developed combining all Digicom technologies and experiences achieved over the years in the Lift sector. Designed to be the **technological core that connects all the devices** present in the new and already installed lifts, it plays the strategic role of the solution.

Emergency telephone systems, displays, sensors and video cameras are shared in the sole device able to connect also the control panel to a Cloud.

The cameras and the sensors can be connected for the management of IoT on the Lift (EElIoT) allowing a predictive maintenance based on real operations or on immediate reporting of anomalies.

Just one SIM, or two in case a backup is needed, to manage all the needs of the lift: from voice support for SOS and periodical calls to telemetry of the control panel through LAN.

Advanced functionalities such as remote management via SMS, make it particularly suitable for Lift and EElIoT (Elevator Escalator IoT) applications.



ROUTER / GATEWAY

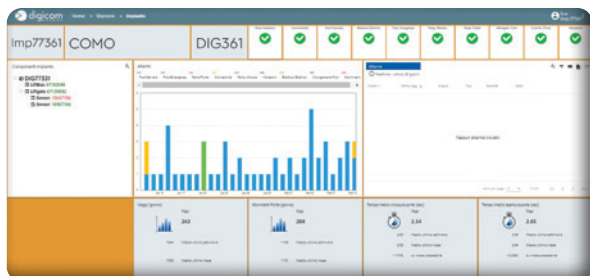
8D5893 LIFTGATE3000 25/03/2024

All brands, products and trademarks are property of their respective owners. The contents of this brochure may be modified without notice.



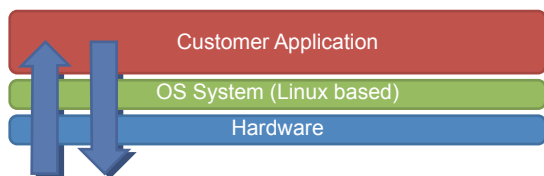
4G LIFTGATE 3000 can manage 2 Voice interfaces so that the remote alarm is connected to one interface and a telephone is connected to the second one to perform intercom functions with the CAR, in case of need.

Special developments have been implemented for the management of the module with the different audio codecs to optimize the passage of DTMF tones reducing their distortions and consequent errors.



The management of 4G LIFTGATE 3000 in the Lift ecosystem is completed by the Digicom **IoT platform Look@CLOUD** that allows to view the Gateway status, in order to check its status in service and/or anomalies.

The use of a multi-level firmware structure also allows the development of custom applications, which through API can interact with the device. With Quectel's QuecOpen mode applications can be integrated more easily.



PACKAGE CONTENT

- 8D5893 4G LIFTGATE 3000
- 1 Ethernet cable
- 1 Telephone cable with terminals
- 1 12VDC, 1,5A power supply
- 2 4G antennas
- 1 Wi-Fi antenna
- 3 connectors for terminal block

TECHNICAL FEATURES

MOBILE NETWORK

- 4G/LTE-FDD bands: B1/B3/B7/B8/B20 (2100/1800/2600/900/800/ MHz)
- HSPA+/UMTS/WCDMA bands: B1/B5/B8 (2100/850/900MHz)
- GSM/GPRS bands: B3/B8 (1800/900MHz)

SPEED

- 4G/LTE DL150Mbps / UL50Mbps, HSPA+/UMTS/WCDMA DL 21.6Mbps /UL 5.76Mbps

INTERFACES

- 1 RJ45 10/100Mbps LAN port
- 2 FXS ports (for analog phone and intercom)
- 2 Slots for any operators' SIM
- Radio Wi-Fi Dual-Band (2.4/5 GHz) IEEE 802.11a/b/g/n/ac
- 1 868MHz Radio interface for sensors
- 1 BLE interface (Bluetooth)
- 1 Digital input
- 1 Relay output (n.o. and n.c.)
- 1 12VDC – 150 mA output

ANTENNAS

- 2 4G/3G/2G external antennas on SMA connector
- 1 Wi-Fi external antenna on SMA-R connector

OPERATIONS

- Automatic and manual 4G/3G/2G connection
- SMS remote management for Connection (ON/OFF), Status and Reboot
- Roaming can be disabled
- DHCP Server and MAC reservation support
- Periodical Watch Dog with Restart every 24 hours (can be set)
- Upgradable Firmware

PHONE INTERFACE

- Voice Interface: FXS
- AC off-hook impedance: 600 ohm
- On-hook line voltage: 48 VDC
- Off-hook line current: 32mA
- Call type: DTMF
- Ring Voltage: 38 Vac – REN:3

CONNECTION and COMPATIBILITY

- Voice call
- Dialers with alarm transmission and periodical test

POWER SUPPLY

- Power 9–32VDC
- Environmental temperature in operation: from -10°C to +50°C
- Operative humidity: from 20% to 80% non condensing
- Integrated lithium polymer backup battery 3,7 VDC – 4.000mAh

VARIOUS

- Material and Weight: Aluminum, 300gr.
- Size 145 × 100 × 50 mm
- Installation: 35mm DIN guide (not included) or desktop

CERTIFICATIONS

- CE Mark
- RED
- RoHS

DIGICOM is a trademark of **B810 S.p.A.**
DIGICOM Via della Ronna, 53A • 21013 Gallarate – VA • Tel. + 39 0331 702611
 sales@digicom.it | support@b810group.it

B810 S.p.A. ITALY • Via Lazzaretti 2/1 Z.I. Mancasale • 42122 Reggio Emilia
 Tel. +39 0522 510200 • Fax +39 0522 506299 • www.b810group.it



B810
GROUP